



# **Water Sensor**

## Installation Guide

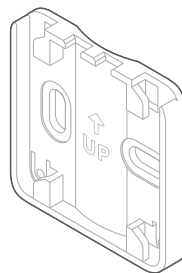
ADC-S40-W

## In the box

- ADC-S40-W Water Sensor
- Mounting bracket
- CR123 battery
- Installation guide
- Screw (x2)
- Cable tie



Water Sensor



Mounting bracket

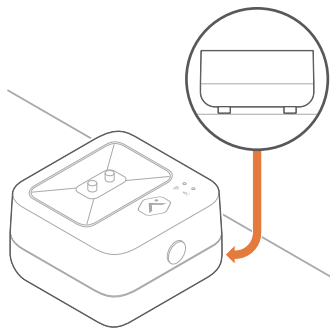
**1 Network LED**    **2 Alert LED**

*NOTE: The rope attachment and probe attachment are sold separately.*

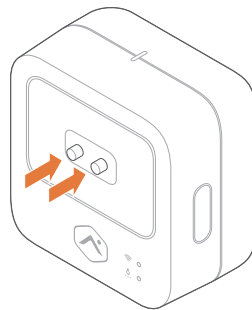
# Installation

## Installing the Water Sensor

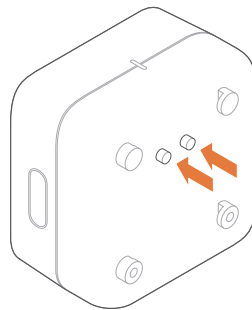
- 1 Place the bottom of the Water Sensor on the ground.
  - *The Water Sensor will detect when water touches the metal pins at the same time on the top or bottom of the device.*
- 2 Remove the battery tab from the Water Sensor.



Top



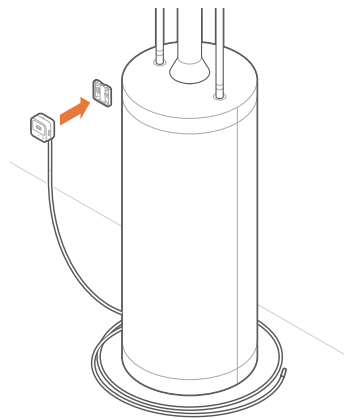
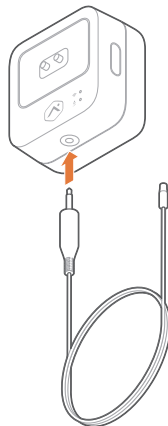
Bottom



### Optional - Installing the Water Sensor with rope attachment (sold separately)

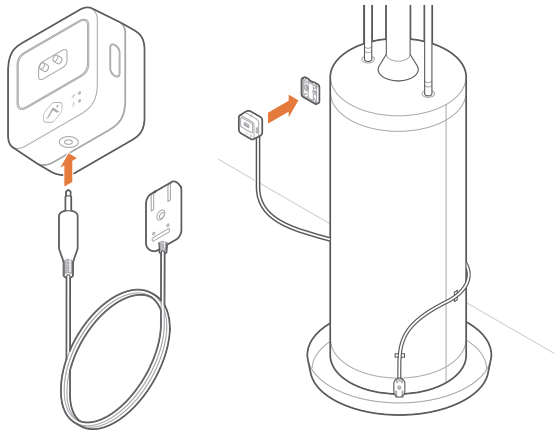
- 1 Connect the rope attachment to the Water Sensor.
- 2 Remove the battery tab from the Water Sensor.
- 3 Mount the Water Sensor to a wall or pipe near the desired monitoring area using the mounting bracket or cable tie provided. Or, lay it on the ground where it will sense water as well.
- 4 Lay the rope attachment along the floor around the potential leak source or around the perimeter of the monitored area. The rope attachment can detect water along the entire length.

*NOTE: The rope attachment is extremely sensitive, will take significant time to dry, and can be damaged by water impurities. If an alert doesn't clear, the rope attachment should be considered damaged and replaced.*



### Optional - Installing the Water Sensor with probe attachment (sold separately)

- 1 Connect the probe attachment to the Water Sensor.
- 2 Remove the battery tab from the Water Sensor.
- 3 Mount the Water Sensor to a wall or pipe near the desired monitoring area using the mounting bracket or cable tie provided. Or, lay it on the ground where it will sense water as well.
- 4 Place the end of the probe attachment in its desired location and mount it using a screw. Make sure the prongs on the end of the probe attachment are in close proximity to the area in which you want to detect water.



# Add the sensor to the Z-Wave network

## Connect to the network using Z-Wave SmartStart

*NOTE: An Alarm.com account is required for this process.  
Power on and add devices one at a time.*

- 1 Power on the Hub.
- 2 Log in to the MobileTech app and find the customer account.
- 3 Add the device using SmartStart and follow the on-screen instructions.
- 4 Scan the device's QR code found on the box or sensor.
- 5 Press the button on the sensor. (You will need to remove the battery tab if you have not already done so.)
  - *When the network LED on the sensor turns solid green, the sensor has been successfully added.*
- 6 Ensure you see the device on your account. This may take up to 2 minutes.

## Connect to the network manually

*TIP: For best results, we recommend having the Hub in the same room as the water sensor you are adding.*

- 1 Remove the battery tab from the sensor.
- 2 Put the Hub into Add mode. Refer to the Hub documentation for more information.
- 3 Press the button on the sensor to add the device to the network.
  - *When the network LED on the sensor turns solid green, the sensor has been successfully added.*
  - *Name the device based on its application.*
  - *This can be done on MobileTech, the Partner Portal, or the Customer Website.*

# Troubleshooting

## If the Water Sensor is not communicating with the Hub

- 1 Press the button on the sensor. The network LED should turn on and then turn off within a few seconds. If this does not happen, the Water Sensor cannot communicate with the Hub. Follow these steps to fix the communication problems:

- a) Install a Z-Wave repeater between the Hub and Water Sensor.

*TIP: Any AC-powered Z-Wave device will act as a Repeater and improve the range between the Hub and the Z-Wave device you are installing.*

- b) If the previous step does not resolve the issue, try deleting the sensor from the network (see next section) and add it again.

## Deleting the sensor from the network

*TIP: For best results, we recommend having the Hub in the same room as the Water Sensor.*

- 1 Put the Hub into Delete mode. Refer to the Hub documentation for more information.
  - 2 Press the button on the sensor to delete it from the network.
- The network LED on the sensor will turn solid green and then blink to indicate the device has been successfully deleted.

*NOTE: If you added the device using SmartStart, the device may automatically add itself back to the network. To completely remove the device, deactivate the key in MobileTech or the Partner Portal, and then delete the device from the network.*

## Notices

### FCC

This device complies with part 15 of the FCC rules. Operation is subject to the following two conditions:

1. This device may not cause harmful interference, and
2. This device must accept any interference received, including interference that may cause undesired operation.

NOTE: Changes and Modifications not expressly approved by Building 36 can void your authority to operate this equipment under Federal Communications Commissions rules.

This equipment has been tested and found to comply with the limits for a Class B digital device, pursuant to part 15 of the FCC Rules. These limits are designed to provide reasonable protection against harmful interference in a residential installation. This equipment generates, uses and can radiate radio frequency energy and, if not installed and used in accordance with the instruction, may cause harmful interference to radio communication. However, there is no guarantee that interference will not occur in a particular installation. If this equipment does cause harmful interference to radio or television reception, which can be determined by turning the equipment off and on, the user is encouraged to try to correct the interference by one or more of the following measures:

- Reorient or relocate the receiving antenna.
- Increase the separation between the equipment and receiver.
- Connect the equipment into an outlet on a circuit different from that to which the receiver is connected.
- Consult the dealer or an experienced radio/TV technician for help.

### IC Notice

This device complies with Industry Canada license-exempt RSS standard(s). Operation is subject to the following two conditions:

1. This device may not cause interference, and
2. This device must accept any interference received, including interference that may cause undesired operation.

Le présent appareil est conforme aux CNR d'Industrie Canada applicables aux appareils radio exempts de licence. L'exploitation est autorisée aux deux conditions suivantes:

1. L'appareil ne doit pas produire de brouillage, et
2. L'appareil doit accepter tout brouillage radioélectrique subi, même si le brouillage est susceptible d'en compromettre le fonctionnement.



## Radiation Exposure Statement

The device has been found to be compliant to the requirements set forth in CFR 47 Sections 2.1091 and Industry Canada RSS-102 for an uncontrolled environment. The antenna(s) used for this transmitter must be installed to provide a separation distance of at least 20 cm from all persons and must not be co-located or operating in conjunction with any other antenna or transmitter.

Le dispositif a été jugé conforme aux exigences énoncées dans les articles 47 CFR 2.1091 et Industrie Canada RSS-102 pour un environnement non contrôlé. L'antenne(s) utilisée pour ce transmetteur doit être installée pour fournir une distance de séparation d'au moins 20 cm de toutes les personnes et ne doit pas être co-localisée ou fonctionner en conjonction avec une autre antenne ou transmetteur.

## Questions?

Visit **answers.alarm.com**  
or contact your service provider.

## Notes

[illegible]

## Notes

[illegible]



8281 Greensboro Drive  
Suite 100  
Tysons, VA 22102

210823  
© 2021 Alarm.com.  
All rights reserved.